

# Exhibitors' Manual



ALL PRINT INDONESIA. The 13<sup>rd</sup> Int'l Exhibition on Printing (pre-press, press, post-press) Machinery, Equipment, Supplies.

**27 - 30 October 2010**  
(4-day exhibition)  
**Jakarta International Expo,**  
Kemayoran, Jakarta,  
Indonesia

**For Further Information, Please contact us at :**  
**KRISTA EXHIBITIONS .** PT. Kristamedia Pratama  
Jalan Blandongan No.28 d/g. Jakarta 11220. Indonesia  
Tel +62 21 6345861, 6345862, 6334581, 6345002  
Fax +62 21 6340140, 6342113  
Email : [info@kristamedia.com](mailto:info@kristamedia.com)  
Web : [kristamedia.com](http://kristamedia.com)

Thank You for your participation in our exhibition .  
Terima kasih atas partisipasinya di pameran !  
Selamat , Sukses dan Berhasil !!! ....

---



27 - 30 October 2010 (4-day exhibition)  
Jakarta International Expo, Kemayoran, Jakarta, Indonesia

ALL PRINT INDONESIA. The 13<sup>rd</sup> Int'l Exhibition on Printing (pre-press, press, post-press) Machinery, Equipment, Supplies.

---

Dear Exhibitor,

Thank you for your participation in the upcoming show ALL PRINT INDONESIA 2010, 27 - 30 October 2010, Jakarta International Expo, Kemayoran, Jakarta, Indonesia

The purpose of this Exhibitor's Manual is to efficiently assist your company in preparing for your forthcoming participation in this exhibition.

You are advised to study this manual carefully and thoroughly to ensure that all relevant matters are processed smoothly and arranged properly. You should have a copy of all forms for your reference, so that queries can be clarified immediately should they arise.

Upon completion of the relevant forms, please return, via fax +62 21 6340140, 6342113, 63869154 to the respective companies stipulated on the top right hand corner of the forms. We would be grateful if you could observe closely the deadlines for submission.

We will endeavour to maintain rates and prices quoted for all items contained herein. However, there is a possibility that these may vary depending on the availability of material or labor before the opening of the Exhibition.

Should you have any queries, please do not hesitate to contact us.

We thank you for your support and cooperation, and we look forward to seeing you soon.

The Organizer  
Krista Exhibitions

Kepada Peserta yang terhormat,

Terima Kasih atas partisipasi anda dalam pameran ALL PRINT INDONESIA 2010, 27 - 30 Oktober 2010, Jakarta International Expo, Kemayoran, Jakarta, Indonesia

Buku panduan peserta ini di tujukan untuk membantu persiapan dari para peserta dalam pameran tersebut.

Kami sarankan untuk mempelajari buku panduan ini dengan teliti, agar proses persiapan pameran dapat berjalan secara lancar. Setiap peserta diharapkan memiliki salinan dari setiap form dari buku panduan agar dijadikan sebagai bukti untuk klarifikasi bila ada hal-hal yang tidak sesuai permintaan para peserta.

Setelah menyelesaikan form dari buku panduan, kami harapkan para peserta mengirimkan kepada kami via fax pada : + 62 21 6340140, 6342113, 63869154 sebelum batas waktu yang ditetapkan.

Kami tetap mempertahankan harga sesuai dengan yang tercantum dalam form buku panduan yang ada. Namun tetap ada kemungkinan perbedaan harga tergantung pada ketersediaan material dan tenaga kerja pada saat-saat sebelum Pameran dimulai.

Demikian surat pemberitahuan kami. Atas dukungan dan kerjasamanya, kami ucapkan Terima Kasih.

Penyelenggara pameran  
Krista Exhibitions

*Thank You  
for Your Participation*

---

# Table Of Contents

	The Exhibition	Page 04
01	Venue	Page 04
02	Dates And Exhibition Hours	Page 04
03	Listing In The Exhibition Catalogue	Page 04
04	Listing In The Show Preview	Page 04
05	Advertisement In The Exhibition Catalogue	Page 04
06	Power Supply & Lighting	Page 05
07	Payment Guidelines	Page 05
	Exhibition Forms:	
	Form 01. Listing In The Show Preview	Page 06
	Form 02. Listing In The Exhibition Catalog	Page 07
	Form 03. Product & Services Index In Exhibition Catalog	Page 08-12
	Form 04. Advertisement In Exhibition Catalog	Page 13
	Form 05. Indoor Outdoor Advertising	Page 14
	Form 06. Join Indoor Outdoor Advertising	Page 15
	Form 07. Exhibitor Badges	Page 16
	Form 08. VIP Invitation Cards	Page 17
	Form 09. Parking Pass	Page 18
	Form 10. Stand Fascia Inscription (For Standard Shell)	Page 19
	Form 11. Special Design or Upgrading of Stands	Page 20
	Form 12. Furniture Rental	Page 21
	Form 13. Electric Supplies Rental	Page 22
	Form 14. Audio Visual Rental	Page 23
	Form 15. Telephone & Faxcimile	Page 24
	Form 16. Compressed Air Supply Rental	Page 25
	Form 17. Water Connection	Page 26
	Form 18. Hotel Reservation	Page 27
	Furniture Display	Page 28-29

---

# The Exhibition

ALL PRINT INDONESIA.

The 13<sup>rd</sup> Int'l Exhibition on Printing (pre-press, press, post-press) Machinery, Equipment, Supplies.

## 1 Venue

Jakarta International Expo, Kemayoran, Jakarta, Indonesia

## 2 Dates And Exhibition Hours

27 October 2010

09:30hrs - 11:00hrs Opening Ceremony

Pukul 09:30 - 11:00 Pembukaan Pameran

11:00hrs - 19:00hrs Trade Visitors Only

Pukul 11:00 - 19:00 Khusus Pengunjung Bisnis

28 - 30 October 2010

10:00hrs - 19:00hrs Trade Visitors Only

Pukul 10:00 - 19:00 Khusus Pengunjung Bisnis

## 3 Listing In The Exhibition Catalogue (form 2)

Exhibitors' company profile will be placed in the exhibition catalogue. Please fill in form 2 completely and fax back to +62 21 6340140, 6342113, 63869154 or email to [info@kristamedia.com](mailto:info@kristamedia.com). Any entries received after the deadline will be placed in the addendum page. Please note that deadline 24 September 2010.

Peserta mendapatkan fasilitas pencantuman profil perusahaan dalam katalog pameran. Harap menyetik formulir dan di fax ke +62 21 6340140, 6342113, 63869154 atau email ke [info@kristamedia.com](mailto:info@kristamedia.com). Jika sampai batas waktu yang ditentukan peserta tidak memberikan profil perusahaannya, maka profilnya akan dicantumkan pada halaman addendum. Batas waktu pengumpulan profil perusahaan dalam katalog pameran tanggal 24 September 2010.

## 4 Listing In The Show Preview (form 1)

Exhibitors are given on entry in the show preview which will be distributed before or during the exhibition date. Please provide your company logo and product photo for this purpose. Please note that deadline is 24 September 2010.

Peserta mendapatkan fasilitas pencantuman logo perusahaan dan foto produk kedalam show preview tanpa biaya tambahan dan akan di distribusikan sebelum atau pada acara pameran. Batas waktu pengumpulan logo perusahaan dan foto produk tanggal 24 September 2010.

## 5 Advertisement In The Exhibition Catalogue (form 4)

Exhibitors who are interested in placing an advertisement in the exhibition catalogue is required to send in their materials before 24 September 2010. Please fill in form 4 and fax back to +62 21 6340140, 6342113, 63869154 or email to [info@kristamedia.com](mailto:info@kristamedia.com).

Peserta yang berminat untuk memasang iklan di katalog pameran dapat memberikan materi iklan sebelum 24 September 2010. harap mengisi formulir no.4 dan fax kembali ke +62 21 6340140, 6342113, 63869154 atau email ke [info@kristamedia.com](mailto:info@kristamedia.com).

---

## 6 Power Supply And Lighting (form 13)

220 volts single phase, 50 cycles; 380 volts three phase, 50 cycles. All electrical work must be carried out by official contractor. Because of the occasional power fluctuations sensitive equipment needs a voltage regulator. Exhibitors requiring electrical power for stand building purposes are requested to submit form 13 before 24 September 2010.

Power supply orders made on site (from 18 October 2010 onwards) will be charged 50% extra, supply will be given the night before the opening of the exhibition (26 October 2010).

Daya listrik yang tersedia bertegangan 220 volt satu phase dan 380 volt tiga phase. Seluruh pemasangan listrik harus dikerjakan oleh official kontraktor karena kekuatan fluktuasi peralatan yang sensitive memerlukan pengatur tegangan volt. Peserta yang memerlukan fasilitas listrik harus memesannya dengan menyerahkan form 13 sebelum 24 September 2010. Jika peserta memerlukan fasilitas listrik untuk tujuan pembangunan stand harap memberitahukan penyelenggara. Pemesanan fasilitas listrik yang dilakukan saat pembangunan stand (mulai 18 Oktober 2010) akan dikenakan tambahan 50% dari harga normal dan dikerjakannya pada malam hari sebelum acara pameran (26 Oktober 2010).

## 7 Payment Guidelines

a) Please pay for exhibition space, telephones, catalogue advertising, billboards and seminars by cheque, bank draft or transfer made payable to "PT. Kristamedia Pratama".

Pembayaran tempat pameran, telepon, iklan katalog, papan reklame, seminar dan yang lainnya dapat dilakukan dengan cek. Seluruh pembayaran dari dalam maupun luar negeri atau transfer, mohon ditujukan kepada "PT. Kristamedia Pratama".

b) Order forms are equivalent to pro-forma invoice. Official invoice/receipt will be given once payment has been received by the organizer.

Formulir pemesanan dianggap sebagai tagihan sementara. Peserta akan menerima faktur asli dan satu kopian bukti pemesanan setelah pembayaran diterima.

Power supply, compressed air, water connections orders made on site will be charged 50% extra, supply will be given the night before the opening of the exhibition (26 October 2010).

Pemesanan listrik, kompresor udara, penyambungan air yang dilakukan pada saat persiapan pembangunan stand akan dikenakan tambahan 50% dari harga normal dan dikerjakan pada malam hari sebelum acara pembukaan (26 Oktober 2010)

---

# LISTING IN THE SHOW PREVIEW

*Please Fill in ther Form Neatly.Thank You. Mohon mengisi Formulir dengan rapih. Terima Kasih.*

Company Name: \_\_\_\_\_

Address: \_\_\_\_\_

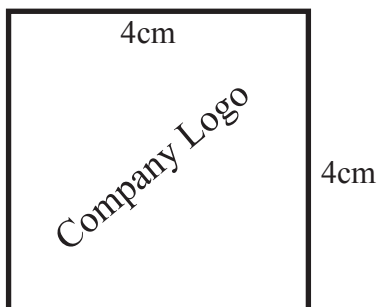
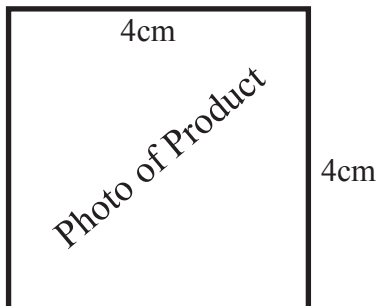
\_\_\_\_\_ Country and Postal Code: \_\_\_\_\_

Telephone: \_\_\_\_\_ Fax: \_\_\_\_\_

E-mail: \_\_\_\_\_ Website: \_\_\_\_\_

Signature of Confirmation	Stand Number
Signed By (Full Name)	Date

Note:  
 Please send your Photo product and your company logo by E-mail  
 or CD (JPEG Format). Before 24 September 2010



# FORM 01

**DEADLINE**  
**24 Sept'10**

**PLEASE  
 FAX BACK  
 or Email Back  
 THIS FORM TO**



**KRISTA**  
 EXHIBITIONS

KRISTA EXHIBITIONS  
 PT. Kristamedia Pramata  
 Jl. Blandongan No.28 d/g  
 Jakarta 11220

Telephone  
 +62 21 6345861, 6345862  
 6334581, 6345002

Facsimile  
 + 62 21 6340140, 6342113  
 63869154

E-mail : [info@kristamedia.com](mailto:info@kristamedia.com)  
 Website : [www.kristamedia.com](http://www.kristamedia.com)

**Attention**  
**Pudji Rahayu**  
[pudji@kristamedia.com](mailto:pudji@kristamedia.com)

**Valans Indradjaja**  
[valans@kristamedia.com](mailto:valans@kristamedia.com)

# LISTING IN THE EXHIBITION CATALOG

*Please Fill in their Form Neatly. Thank You. Mohon mengisi Formulir dengan rapih. Terima Kasih.*

Company Name: \_\_\_\_\_

Address: \_\_\_\_\_

\_\_\_\_\_ Country and Postal Code: \_\_\_\_\_

Telephone: \_\_\_\_\_ Fax: \_\_\_\_\_

E-mail: \_\_\_\_\_ Website: \_\_\_\_\_

Signature of Confirmation	Stand Number
Signed By (Full Name)	Date

*The information required below will form part of your entry in the exhibition catalogue  
 This entry is FREE of charge. Please Fill in appropriately, as it will appear in the exhibition catalog*

Company Name: \_\_\_\_\_

**HEAD OFFICE**

Company Name: \_\_\_\_\_

Address: \_\_\_\_\_

\_\_\_\_\_

Country: \_\_\_\_\_ Postal Code: \_\_\_\_\_

Telephone 1: \_\_\_\_\_ Telephone 2: \_\_\_\_\_

Fax 1: \_\_\_\_\_ E-mail: \_\_\_\_\_

PIC: \_\_\_\_\_

Position: \_\_\_\_\_ Website: \_\_\_\_\_

Line of Business (Maximal 80 words): \_\_\_\_\_

\_\_\_\_\_

\_\_\_\_\_

**BRANCH OFFICE / AGENT / PRINCIPAL**

Company Name: \_\_\_\_\_

Address: \_\_\_\_\_

\_\_\_\_\_

Country: \_\_\_\_\_ Postal Code: \_\_\_\_\_

Telephone 1: \_\_\_\_\_ Telephone 2: \_\_\_\_\_

Fax 1: \_\_\_\_\_ E-mail: \_\_\_\_\_

PIC: \_\_\_\_\_

Position: \_\_\_\_\_ Website: \_\_\_\_\_

You can provide data of more Branch office / Agent / Principal details on another piece of paper. Thank you

# FORM 02

**DEADLINE**  
**24 Sept'10**

**PLEASE  
FAX BACK  
or Email Back  
THIS FORM TO**



**KRISTA**  
EXHIBITIONS

KRISTA EXHIBITIONS  
 PT. Kristamedia Pramata  
 Jl. Blandongan No.28 d/g  
 Jakarta 11220

Telephone  
 +62 21 6345861, 6345862  
 6334581, 6345002

Facsimile  
 + 62 21 6340140, 6342113  
 63869154

E-mail : info@kristamedia.com  
 Website : www.kristamedia.com

**Attention**  
**Pudji Rahayu**  
 pudji@kristamedia.com

**Valans Indradjaja**  
 valans@kristamedia.com



# PRODUCT & SERVICES INDEX IN EXHIBITION CATALOG

## PREPRESS AND PREMEDIA

1. Cameras
2. Waste disposal system
3. Bending devices for printing plates
4. Extraction plant for gases
5. Playing platforms and presentation systems
6. Waste water treatment
7. Filling equipment
8. Etching equipment for gravure
9. Etch depth measuring devices
10. Washing out units for letterpress
11. Exposure meters
12. Exposure control devices
13. Coating machines for printing plates
14. Production data processing
15. Image and word processing systems
16. Image processing software
17. Image viewing devices
18. Cad system
19. Cd - technologies
20. Colour management systems
21. Computer to film systems
22. Computer to plate systems
23. Computer to press systems
24. Database publishing
25. Data archiving
26. Databank services
27. Computer to screen systems
28. Database systems
29. Densitometers
30. Desktop publishing systems (dtp)
31. Printing control strips and test bars
32. Darkroom equipment
33. Burning in cabinets
34. Printing plate processors
35. Film processors
36. Colour matching systems
37. Colour extract and enlargement systems
38. Colour management and test apparatus
39. Film processing equipment
40. Film exposers
41. Filters (for filtrate liquid or gaseous substances)
42. Electroplating facilities
43. Design and make up systems
44. Engraving machines for gravure printing
45. Plate production
46. Engraving machines for embossing plates
47. Holographic systems
48. Cameras, digital
49. Conditioning equipment
50. Printing down equipment for letterpress and Flexo platemaking
51. Printing down equipment for offset platemaking
52. Printing down equipment for Photographic films and papers
53. Printing down equipment for Screen printing stencils
54. Printing down equipment for Gravure printing formes
55. Blankets for printing down units
56. Laser technology for forme making
57. Layout auxiliary equipment
58. Illuminated and make-up tables
59. Light integrators
60. Light sources for reproduction
61. Measuring and testing equipment
62. Mounting and registering systems For printing formes
63. Paste-up printing-down units
64. Mounting systems for reproduction
65. Optical equipment for reproduction
66. Plate exposers
67. Plotters
68. Embossing formes and dies
69. Programming units for reproduction
70. Proof systems
71. Raster image processors rip's
72. Editing systems , control systems
73. Register systems
74. Step and repeat machines (Photocomposing machines)
75. Retouching systems
76. Recovery plants for liquids and gases
77. Scanners

78. Fonts
79. Page make-up and layout systems
80. Text recording machines
81. Drying unit and cabinets
82. Enlargers for reproduction
83. Video systems
84. Work flow systems
85. Cylinder grinding machines

## PRINTING

86. Waste disposal systems
87. Exhaust air filtration plant
88. Extraction plant for solids and liquids
89. Extraction plant for gases
90. Waste water treatment plant
91. Addressing equipment for printed products
92. Waste paper disposal plant
93. Web viewers , web guides
94. Banding machines
95. Supplement inserting machines
96. Powdering devices
97. Production data procession
98. Ticket printing machines
99. Tin printing machines
100. Braille printing technology
101. Layboys
102. Sheet feeders
103. Sheet delivery units
104. Sheet decurlers
105. Sheet piling devices
106. Postage stamp printing presses
107. Envelope printing presses
108. Computer to press systems
109. Densitometers
110. Digital printing presses
111. Digital large format printing systems
112. Digital colour printing systems
113. Printing and die-cutting machines, Automated (combines)
114. Printing and embossing presses, combined
115. Print control strips and measurement bars
116. Printing presses for non-flat objects
117. Print blanket tension devices
118. Imprinting units
119. Continuous stationery glueing apparatus
120. Continuous stationery printing presses
121. Continuous stationery converting machines
122. Static eliminators
123. Dust removing equipment for printing presses
124. Label printing machines
125. Folders for web-fed presses
126. Ink milling and mixing machines
127. Colour measuring and testing equipment
128. Ink formulating systems
129. Ink agitators for printing machines
130. Color care system
131. Ink pre-setting systems , ink rollers
132. Cooling equipment for ink units
133. Ink feed and ink level control devices for ink units
134. Damping rollers
135. Damping fluid management systems
136. Damping units
137. Filters (for liquids and gases)

**FORM  
03**

Please fill in FORM 3  
 according to your line of business  
 with the number in the bracket  
**THANK YOU**  
 Mohon mengisi Form 3  
 sesuai bidang usaha  
 dengan nomor yang tersedia  
 Terima Kasih

# PRODUCT & SERVICES INDEX IN EXHIBITION CATALOG

1. Flexographic proof presses
2. Flexographic machines for package printing
3. Flexographic printing presses for newspaper
4. Flexographic printing presses
5. Flexographic rollers
6. Foil printing presses
7. Foil stamping machines
8. Conveyor systems (not floor conveyors)
9. Stationery imprinting machines
10. Blanket washing equipment
11. Letterpress sheet-fed presses
12. Letterpress web-fed presses
13. Letterpress platens
14. Holographic systems
15. Elevating platforms
16. Card manufacturing systems
17. Adhesive applicators
18. Conditioning equipment
19. Control devices
20. Compensating stacker
21. Laboratory printing presses
22. Varnishing rollers
23. Press control desk technology
24. Hole punches
25. Ventilation systems
26. Mailer machines
27. Measuring and testing equipments
28. Water marking machines
29. Numbering equipment for stationary, Security printing
30. Numbering units and machines
31. Offset proofing machines
32. Offset presses, sheet-fed
33. Offset presses, web-fed
34. Paging machines and equipment
35. Palletising equipment
36. Paper web moistening equipment
37. Moisture content measuring equipment for paper
38. Paper testing devices
39. Perforating machines
40. Perforating instruments and equipment
41. Embossed foil printing presses
42. Embossing machinery
43. Impression cylinders, gravure and flexo printing
44. Sheetcutter installed in printing presses
45. Doctor-blade grinding machines
46. Anilox rollers for flexographic printing
47. Control systems
48. Register control systems
49. Register systems
50. Cleaning machines for printing Forms and machine parts
51. Relief imitation printing presses
52. Reel splicers , reel reverses
53. Reeling machines for film web Winding up and unwinding
54. Rotary perforating units
55. Recovery plants for liquids and gases
56. Heat recovery equipment
57. Jogging tables
58. Noise reduction equipment
59. Cutting, punching and scoring rules
60. Shrink film packaging equipment
61. Screen printing devices and aids
62. Screen printing machines (sheet fed)
63. Screen printing machines (web-fed)
64. Frame for silk-screen printing
65. Screen washing equipment
66. Expanding shafts and couplings
67. Die stamping machines
68. Stacking and piling equipment
69. Pile turners
70. Strip wrapper banding machines
71. Tampon printing machines
72. Gravure proofing presses
73. Gravure presses, sheet-fed
74. Rotogravure presses, web-fed
75. Gravure cylinders
76. Dryers for printed products
77. Trying machines
78. Mailroom equipment for printed products
79. Viscosity control devices
80. Roller finishing machines
81. Roller washing machines
82. Non-stop rewinders

83. Security printing machines
84. Winding shafts
85. Work flow systems
86. Counting equipment
87. Zigzag folders
88. Cylinder correction equipment for gravure printing
89. Cylinder racks

## PRINT FINISHING

90. Waste disposal systems
91. Exhaust air purification units
92. Packing machines
93. Extraction plant for solid and liquids
94. Extraction plant for gases
95. Addressing equipment for printed products
96. Waste paper disposal plant
97. Bonding machines , banding machines
98. Steel rule die-making machines
99. Loading and unloading devices for Guillotines and guillotines systems
100. Supplement insertion machines
101. Production data processing
102. Block-making machines, block stacker
103. Sheet gluing machines
104. Sheet feeders
105. Sheet delivery units
106. Sheet piling devices
107. Book embossing presses
108. Book block feeder
109. Book block nipping and smashing press
110. Book casemaking machines
111. Book jacketing machines
112. Book manufacturing lines
113. Book forming and pressing machines
114. Book back rounding and pressing machines
115. Book back gluing and back lining machines
116. Bundling machines
117. Bundle presses
118. Wire and plastic binding machines
119. Wire stitchers
120. Three-knife trimmers
121. Corner rounding machines
122. Back stripping machines
123. Cashing-in machines
124. Continuous stationery
125. Destackers
126. Label manufacturing machines
127. Labelling machines for printed products
128. Sewing machines
129. Fold burning-in machines
130. Folding and plasting units
131. Folding machines
132. Nipping press
133. Filters (for liquids and gases)
134. Foil sealing machines
135. Conveyor systems (not floor conveyors)
136. Collating machines for printed forms
137. Gilt edge machines
138. Stitcher-folder-trimmer
139. Elevating platforms
140. Calendar block making machines
141. Headbanding and backlining machines

**FORM  
03**

Please fill in FORM 3  
 according to your line of business  
 with the number in the bracket  
**THANK YOU**  
 Mohon mengisi Form 3  
 sesuai bidang usaha  
 dengan nomor yang tersedia  
 Terima Kasih

# PRODUCT & SERVICES INDEX IN EXHIBITION CATALOG

1. Card manufacturing systems
2. Laminating machines , stitching machines
3. Perfect binding machines
4. Glueing machines
5. Adhesive applying machines and devices
6. Bookbinding
7. Glue feeding systems
8. Conditioning equipments
9. Compensating stacker
10. Varnishing machines, lacquering machines
11. Straight knives
12. Press control desk technology
13. Bookmark ribbon machines
14. Ruling machines
15. Hole punching and eyeleting machines
16. Hole punches
17. Ventilation systems
18. Mailer machines
19. Measuring and testing equipment
20. Metal corners
21. Rivetting machines
22. Numbering units and machines
23. Cloth cutter
24. Paging machines and equipment
25. Palletising equipment
26. Paper drilling machines
27. Moisture content measuring equipment for paper
28. Cardboard cutters
29. Perforating machines
30. Perforating instruments and equipment
31. Embossing formes and dies
32. Control systems
33. Index tabs cutting and printing machines
34. Jogging tables
35. Gathering and stitching machines
36. Noise reduction equipment
37. Cheque-book making machines
38. Cutting, punching and scoring rules
39. Guillotines and guillotine systems
40. Jacketing machines
41. Expanding shafts and couplings
42. Inside lining machines
43. Pile stackers
44. Die-cutting formes for bookbinding & print finishing
45. Stacking and piling equipment
46. Pile turners
47. Strip wrapper banding machines
48. Splitting saw
49. Drying plants
50. Trying machines
51. Mailroom equipment for printed products
52. Endpapering machines
53. Work flow systems
54. Counting equipments
55. Zigzag folders
56. Gathering and collating machines
57. **PAPER CONVERTING**
57. Package production
58. Waste disposal systems
59. Packing machinery
60. Tally-roll manufacturing machines
61. Arm stitchers
62. Collapsible box gluer
63. Stripping equipment
64. Autopasters/splicer
65. Band saws
66. Steel rule die-making machines
67. Web guides
68. Cup making machines
69. Flocking machines and plants
70. Cardboard lining machines, Box covering machines
71. Coating machines and devices
72. Production data procession
73. Bag making machines
74. Bending machines
75. Beer mat making machines
76. Letter-file-making machines
77. Expanding files making machines
78. Compact-disc sleeve making machines
79. Sanitary towel making machines]
80. Cover making machines
81. Diagram multiplex reel-making machines
82. Can manufacturing machinery from paper, Card, cardboard
83. Automatic printing, folding and closing machines
84. Printer-slotters
85. Duplicate book making machines
86. Ice cream cone wrapping machinery
87. Static eliminators
88. Label making machines
89. Thread knotting machines for tags
90. Folding and glueing machines
91. Folding box making machines
92. Folding box wrapping machines
93. Folding box printing and stamping machines
94. Folding box glueing machines
95. Folding carton prefeeder
96. Fibrous material moulding machine
97. Carton windowing machines
98. Moisturised wipe making machine
99. Flame welders for watertight packaging
100. Conveyor systems (not floor conveyors)
101. Folding box lining machines
102. Face towel making machines
103. Gumming apparatus and machines
104. Piston operated stamping machines
105. Tube slicing and dividing machines
106. Tube winding machines
107. Impregnating machines
108. Edgeboard protector manufacturing lines
109. Edge glueing machines
110. Lining machines, laminating machines
111. Till roll making machines
112. Adhesive applying machines and devices
113. Composite can manufacturing machines
114. Conditioning equipment
115. Circular knife
116. Circular shears
117. Envelope feeder
118. Straight knife
119. Slitting and cross cutting machines
120. Ventilation systems
121. Knife grinding machines
122. Plant for metallizing
123. Palletising equipment
124. Paper towel making machines
125. Paper serviette making machines
126. Paper handkerchief making machines
127. Fibre drum manufacturing lines
128. Cardboard plate making machines
129. Paraffining machines, Waxing machines and plants
130. Embossing machinery
131. Embossing and punching machinery
132. Embossed foil printing machines
133. Cross cutting machines
134. Control systems
135. Creasing and scoring machines
136. Combination creasing, scoring, Slitting and cross cutting machines
137. Reel slitting and rewinding machines
138. Reeling machines for film Web winding up and unwinding
139. Rotary cross cutting machines
140. Rotary cutters
141. Rotary die cutting machines
142. Sack making machines
143. Box making machines, carton making machines
144. Box lining and converting machines

**FORM  
03**

Please fill in FORM 3  
 according to your line of business  
 with the number in the bracket  
**THANK YOU**  
 Mohon mengisi Form 3  
 sesuai bidang usaha  
 dengan nomor yang tersedia  
 Terima Kasih

# PRODUCT & SERVICES INDEX IN EXHIBITION CATALOG

1. Slotting machines
2. Cutting, punching and scoring rules
3. Lever-file making machine
4. Cutting machines
5. Stationery production machines
6. Seal making machines
7. Expanding shafts and couplings
8. Expanding shafts insertion and withdrawal devices
9. Punching forms
10. Die-cutting machines
11. Embossing plate
12. Stacking devices for folding carton blanks
13. Stacking and piling equipment
14. Pile turners
15. Helical slitting machines
16. Wallpaper making machines
17. Deep drawing machines for paperboard
18. Toilet paper-making machines
19. Carrier bag handle glueing machines
20. Carrier bag making machines
21. Tray making machines
22. Shipping bag making machines
23. Corrugated board making machines
24. Corrugated board converting machines
25. Non-stop rewinders
26. Winding shafts
27. Nappy making machines
28. Work flow systems
29. Counting equipment
30. Cotton wool cutting machines

## MATERIALS / CONSUMABLES

31. Packing materials
32. Baryta paper
33. Powdering materials
34. Sheet printing papers, two-side machine coated
35. Book cover materials
36. Accounts book papers and card index board
37. Chemicals for pre-press production phases
38. Chromo duplex board
39. Chromo board
40. Chromo triplex board
41. Decorative papers, document papers
42. Wire and plastic bindings
43. Printing inks
44. Printing formes for flexographic printing
45. Printing formes for letterpress
46. Printing formes for offset printing
47. Screen printing formes
48. Printing formes for gravure printing
49. Printing aids
50. Printer's varnishes
51. Printing blankets
52. India and bible papers (thin stock)
53. Letter copying papers
54. Vegetable parchment
55. Backlining papers, one-time carbon paper
56. Electronic papers
57. Continuous stationery papers
58. Label and wrapping papers
59. Inks for graphic design and retouching
60. Fine papers and board
61. Damping water additives
62. Format printing papers, uncoated
63. Photographic materials for reproduction
64. Gilt edge material
65. Gummed papers
66. Blanket washing and rejuvenating solutions
67. Cast-coated papers, cast-coated boards
68. Stitching wires and clamps
69. Cartridge boxes
70. Identification systems
71. Super-calendered papers
72. Impregnated papers
73. Ink-jet papers
74. Index board
75. Laminated foils
76. Adhesive tapes and foils
77. Adhesives and glues
78. Copy papers
79. Circular knives
80. Art paper and board

81. Plastic film
82. Map papers
83. Straight knives
84. Laser printing papers
85. Layout materials
86. Fluorescent inks
87. Dyeline copying paper
88. Machine tapes
89. Matrix boards
90. Metal film
91. Metallized paper, metallic papers
92. Metallic powder and paste pigments
93. Mounting foils
94. Rivets, eyelets
95. Nacreous lustre pigments
96. Pigment papers, poster paper
97. Postcard board
98. Hot-stamping foils
99. Embossing formes and dies
100. Printing doctor blades
101. Relief imitation materials
102. Papers for web printing, uncoated
103. Papers for web printing machines coated On both sides
104. Cutting sticks
105. Carbonless copy papers
106. Self-adhesive materials for printing
107. Security papers
108. Screen printing chemicals and material for Stencil making
109. Screen printing inks
110. Screen print fabrics
111. Screen printing aids
112. Sleeves
113. Typewriting papers
114. Special papers, synthetic papers
115. Thermosensitive papers
116. Toner
117. Papers for fly leaves
118. Roller coverings
119. Roller washing and treating solutions
120. Corrugated board unprocessed papers
121. Book printing papers
122. Newsprint papers
123. Pulp board

## SERVICES

124. Training and further education
125. Consulting
126. Data processing service
127. Trade directories
128. Trade and technical literature
129. Technical dictionaries
130. Trade magazines
131. Financial services
132. Used machinery dealers
133. Business branch software
134. Management information systems
135. Machine mounting
136. Multi-media services
137. Management software
138. Industrial associations

**FORM  
03**

Please fill in FORM 3  
 according to your line of business  
 with the number in the bracket  
**THANK YOU**  
 Mohon mengisi Form 3  
 sesuai bidang usaha  
 dengan nomor yang tersedia  
 Terima Kasih

# ADVERTISEMENT IN EXHIBITION CATALOG

Please Fill in their Form Neatly. Thank You. Mohon mengisi Formulir dengan rapih. Terima Kasih.

Company Name: \_\_\_\_\_  
 Address: \_\_\_\_\_  
 \_\_\_\_\_ Country and Postal Code: \_\_\_\_\_  
 Telephone: \_\_\_\_\_ Fax: \_\_\_\_\_  
 E-mail: \_\_\_\_\_ Website: \_\_\_\_\_

Signature of Confirmation	Stand Number
Signed By (Full Name)	Date

**FORM  
04**

**DEADLINE  
24 Sept'10**

**PLEASE  
FAX BACK  
or Email Back  
THIS FORM TO**



**KRISTA  
EXHIBITIONS**

KRISTA EXHIBITIONS  
 PT. Kristamedia Pramata  
 Jl. Blandongan No.28 d/g  
 Jakarta 11220

Telephone  
 +62 21 6345861, 6345862  
 6334581, 6345002

Facsimile  
 + 62 21 6340140, 6342113  
 63869154

E-mail : info@kristamedia.com  
 Website : www.kristamedia.com

**Attention  
Pudji Rahayu**  
 pudji@kristamedia.com

**Valans Indradjaja**  
 valans@kristamedia.com

PLEASE TICK (  ) YOUR CHOICE

### ADVERTISEMENT RATES in FULL COLOR

Outside Back Cover	( ) USD 1,200
Inside Front Cover	( ) USD 1,100
Inside Back Cover	( ) USD 950
Opposite Inside Front Cover	( ) USD 850
Opposite Inside Back Cover	( ) USD 800
Full Page	( ) USD 700

\_\_\_\_\_ TOTAL COST: \_\_\_\_\_

### ADVERTISEMENT SIZE

Full Page	Width	x	Height
Trim Size	145mm	x	210mm
Type Area	130mm	x	200mm

MATERIAL DEADLINE: 24 September 2010

PLEASE SEND US YOUR ADVERTISEMENT MATERIAL  
 ON CD IN JPEG

Should you need Design services, Advertisement Design Cost : USD 150/ page

Orders are valid only when accompanied by full remittance.  
 Payment should be made payable to PT. KRISTAMEDIA PRATAMA

# INDOOR OUTDOOR ADVERTISING

*Please Fill in their Form Neatly. Thank You. Mohon mengisi Formulir dengan rapih. Terima Kasih.*

Company Name: \_\_\_\_\_

Address: \_\_\_\_\_

\_\_\_\_\_ Country and Postal Code: \_\_\_\_\_

Telephone: \_\_\_\_\_ Fax: \_\_\_\_\_

E-mail: \_\_\_\_\_ Website: \_\_\_\_\_

Signature of Confirmation	Stand Number
Signed By (Full Name)	Date

**FORM  
05**

**DEADLINE  
24 Sept'10**

**PLEASE  
FAX BACK  
or Email Back  
THIS FORM TO**



**KRISTA  
EXHIBITIONS**

KRISTA EXHIBITIONS  
 PT. Kristamedia Pramata  
 Jl. Blandongan No.28 d/g  
 Jakarta 11220

Telephone  
 +62 21 6345861, 6345862  
 6334581, 6345002

Facsimile  
 + 62 21 6340140, 6342113  
 63869154

E-mail : info@kristamedia.com  
 Website : www.kristamedia.com

**Attention  
Pudji Rahayu**  
 pudji@kristamedia.com

**Valans Indradjaja**  
 valans@kristamedia.com

PLEASE TICK (  ) YOUR CHOICE

TYPES	MIN. QTY (Same Design)	PRICE/PIECE
( ) X - Banner 80cm x 180cm	1 piece	USD 194
( ) Mini - X Banner 25cm x 40cm	2 piece	USD 58
( ) Hanging Banner 90cm x 175cm	5 piece	USD 79
( ) Vertical Banner 90 x 600cm	5 piece	USD 132
( ) Floor Brand Image, diameter 80cm	2 piece	USD 150

	TOTAL COST:

The price stated above is for the 4-day event. It already includes the cost of putting them up around the exhibition ground. Spots to be determined by the Organizer.

MATERIAL DEADLINE: 24 September 2010

PLEASE SEND US YOUR ADVERTISEMENT MATERIAL ON CD IN JPEG

Should you need Design services, Design Cost : USD 100/type

Orders are valid only when accompanied by full remittance.  
 Payment should be made payable to PT. KRISTAMEDIA PRATAMA

# JOIN INDOOR OUTDOOR ADVERTISING

Please Fill in their Form Neatly. Thank You. Mohon mengisi Formulir dengan rapih. Terima Kasih.

Company Name: \_\_\_\_\_

Address: \_\_\_\_\_

\_\_\_\_\_ Country and Postal Code: \_\_\_\_\_

Telephone: \_\_\_\_\_ Fax: \_\_\_\_\_

E-mail: \_\_\_\_\_ Website: \_\_\_\_\_

Signature of Confirmation	Stand Number
Signed By (Full Name)	Date

# FORM 06

**DEADLINE**  
**24 Sept'10**

**PLEASE  
FAX BACK  
or Email Back  
THIS FORM TO**



**KRISTA**  
EXHIBITIONS

KRISTA EXHIBITIONS  
 PT. Kristamedia Pramata  
 Jl. Blandongan No.28 d/g  
 Jakarta 11220

Telephone  
 +62 21 6345861, 6345862  
 6334581, 6345002

Facsimile  
 + 62 21 6340140, 6342113  
 63869154

E-mail : info@kristamedia.com  
 Website : www.kristamedia.com

**Attention**  
**Pudji Rahayu**  
 pudji@kristamedia.com

**Valans Indradjaja**  
 valans@kristamedia.com

PLEASE TICK (  ) YOUR CHOICE

TYPES	MIN. QTY (Same Design)	PRICE/PIECE
( <input type="checkbox"/> ) Hanging Banner 60cm x 170cm	5 piece	USD 96
( <input type="checkbox"/> ) Vertical Banner 60cm x 600cm	5 piece	USD 147
( <input type="checkbox"/> ) Floor Brand Image, diameter 100cm	2 piece	USD 225
( <input type="checkbox"/> ) Backdrop Opening Ceremony		

\_\_\_\_\_

\_\_\_\_\_ **TOTAL COST:** \_\_\_\_\_

\_\_\_\_\_

The price stated above is for the 4-day event. It already includes the cost of putting them up around the exhibition ground. Spots to be determined by the Organizer.

MATERIAL DEADLINE: 24 September 2010

PLEASE SEND US YOUR ADVERTISEMENT MATERIAL ON CD IN JPEG

Orders are valid only when accompanied by full remittance.  
 Payment should be made payable to PT. KRISTAMEDIA PRATAMA



27 - 30 October 2010 (4-day exhibition)  
 Jakarta International Expo, Kemayoran, Jakarta, Indonesia

ALL PRINT INDONESIA. The 13<sup>rd</sup> Int'l Exhibition on Printing (pre-press, press, post-press) Machinery, Equipment, Supplies.

# EXHIBITOR BADGES

*Please Fill in their Form Neatly. Thank You. Mohon mengisi Formulir dengan rapih. Terima Kasih.*

Company Name: \_\_\_\_\_  
 Address: \_\_\_\_\_  
 \_\_\_\_\_ Country and Postal Code: \_\_\_\_\_  
 Telephone: \_\_\_\_\_ Fax: \_\_\_\_\_  
 E-mail: \_\_\_\_\_ Website: \_\_\_\_\_

Signature of Confirmation	Stand Number
Signed By (Full Name)	Date

**THE ORGANIZER WILL PROVIDE:**

3 Exhibitor's Badge	009 - 012sqm
6 Exhibitor's Badge	013 - 024sqm
9 Exhibitor's Badge	025 - 036sqm
12 Exhibitor's Badge	037 - 048sqm
15 Exhibitor's Badge	049 - 060sqm
18 Exhibitor's Badge	061 - 072sqm
21 Exhibitor's Badge	073 - 084sqm
24 Exhibitor's Badge	085 - 126sqm

Request for additional badges will be charged at USD.5 per badge & badge bag

Yes, I will be needing additional badges

Amount of badges needed \_\_\_\_\_ pieces.

	TOTAL COST:
_____	_____

# FORM 07

**DEADLINE  
24 Sept'10**

**PLEASE  
FAX BACK  
or Email Back  
THIS FORM TO**



**KRISTA**  
EXHIBITIONS

KRISTA EXHIBITIONS  
 PT. Kristamedia Pramata  
 Jl. Blandongan No.28 d/g  
 Jakarta 11220

Telephone  
 +62 21 6345861, 6345862  
 6334581, 6345002

Facsimile  
 + 62 21 6340140, 6342113  
 63869154

E-mail : info@kristamedia.com  
 Website : www.kristamedia.com

**Attention  
Pudji Rahayu**  
 pudji@kristamedia.com

**Valans Indradjaja**  
 valans@kristamedia.com

Orders are valid only when accompanied by full remittance.  
 Payment should be made payable to PT. KRISTAMEDIA PRATAMA



27 - 30 October 2010 (4-day exhibition)  
 Jakarta International Expo, Kemayoran, Jakarta, Indonesia

ALL PRINT INDONESIA. The 13<sup>rd</sup> Int'l Exhibition on Printing (pre-press, press, post-press) Machinery, Equipment, Supplies.

# V.I.P INVITATION CARDS

*Please Fill in ther Form Neatly.Thank You. Mohon mengisi Formulir dengan rapih. Terima Kasih.*

Company Name: \_\_\_\_\_  
 Address: \_\_\_\_\_  
 \_\_\_\_\_ Country and Postal Code: \_\_\_\_\_  
 Telephone: \_\_\_\_\_ Fax: \_\_\_\_\_  
 E-mail: \_\_\_\_\_ Website: \_\_\_\_\_

Signature of Confirmation	Stand Number
Signed By (Full Name)	Date

PLEASE TYPE, IN BLOCK CAPITALS, THE VIPs WHOM YOU WISH TO INVITE.  
 HAND WRITTEN LIST WILL NOT BE ACCEPTED.

Name: \_\_\_\_\_ Position: \_\_\_\_\_  
 Company: \_\_\_\_\_  
 Address: \_\_\_\_\_  
 Country: \_\_\_\_\_ Postal Code: \_\_\_\_\_  
 E-mail: \_\_\_\_\_  
 Telephone: \_\_\_\_\_ Fax: \_\_\_\_\_  
 \*\*\*\*\*  
 Name: \_\_\_\_\_ Position: \_\_\_\_\_  
 Company: \_\_\_\_\_  
 Address: \_\_\_\_\_  
 Country: \_\_\_\_\_ Postal Code: \_\_\_\_\_  
 E-mail: \_\_\_\_\_  
 Telephone: \_\_\_\_\_ Fax: \_\_\_\_\_  
 \*\*\*\*\*  
 Name: \_\_\_\_\_ Position: \_\_\_\_\_  
 Company: \_\_\_\_\_  
 Address: \_\_\_\_\_  
 Country: \_\_\_\_\_ Postal Code: \_\_\_\_\_  
 E-mail: \_\_\_\_\_  
 Telephone: \_\_\_\_\_ Fax: \_\_\_\_\_

# FORM 08

**DEADLINE**  
**24 Sept'10**

**PLEASE  
 FAX BACK  
 or Email Back  
 THIS FORM TO**



**KRISTA**  
 EXHIBITIONS

KRISTA EXHIBITIONS  
 PT. Kristamedia Pramata  
 Jl. Blandongan No.28 d/g  
 Jakarta 11220

Telephone  
 +62 21 6345861, 6345862  
 6334581, 6345002

Facsimile  
 + 62 21 6340140, 6342113  
 63869154

E-mail : info@kristamedia.com  
 Website : www.kristamedia.com

**Attention**  
**Pudji Rahayu**  
 pudji@kristamedia.com

**Valans Indradjaja**  
 valans@kristamedia.com

You can provide data of more V.I.P guests on another piece of paper. (Maximum 10 VIP guests)Thank you

# PARKING PASS

Please Fill in their Form Neatly. Thank You. Mohon mengisi Formulir dengan rapih. Terima Kasih.

Company Name: \_\_\_\_\_  
 Address: \_\_\_\_\_  
 \_\_\_\_\_ Country and Postal Code: \_\_\_\_\_  
 Telephone: \_\_\_\_\_ Fax: \_\_\_\_\_  
 E-mail: \_\_\_\_\_ Website: \_\_\_\_\_

Signature of Confirmation	Stand Number
Signed By (Full Name)	Date

Please Type clearly the police number of the car(s),  
 which will be operate during exhibition day 24 - 31 October 2010.  
 For 9sqm = 1 Free Parking  
 For additional per 1 police number = Rp. 100.000,-/Car and Rp. 50.000,-/Motorcycle  
 \* Cross if unnecessary  
 POLICE NUMBER CAR AND MOTORCYCLE

<input type="text"/>	*Mobil/Motor
<input type="text"/>	*Mobil/Motor
<input type="text"/>	*Mobil/Motor
<input type="text"/>	*Mobil/Motor
<input type="text"/>	*Mobil/Motor
<input type="text"/>	*Mobil/Motor
<input type="text"/>	*Mobil/Motor
<input type="text"/>	*Mobil/Motor
<input type="text"/>	*Mobil/Motor
<input type="text"/>	*Mobil/Motor
<input type="text"/>	*Mobil/Motor

# FORM 09

**DEADLINE**  
**24 Sept'10**

**PLEASE  
 FAX BACK  
 or Email Back  
 THIS FORM TO**



**KRISTA**  
 EXHIBITIONS

KRISTA EXHIBITIONS  
 PT. Kristamedia Pramata  
 Jl. Blandongan No.28 d/g  
 Jakarta 11220

Telephone  
 +62 21 6345861, 6345862  
 6334581, 6345002

Facsimile  
 + 62 21 6340140, 6342113  
 63869154

E-mail : info@kristamedia.com  
 Website : www.kristamedia.com

**Attention**  
**Pudji Rahayu**  
 pudji@kristamedia.com

**Valans Indradjaja**  
 valans@kristamedia.com



# SPECIAL DESIGN OR UPGRADING OF STANDS

*Please Fill in their Form Neatly. Thank You. Mohon mengisi Formulir dengan rapih. Terima Kasih.*

This form is for exhibitors building or upgrading stands using NON-Official Contractor

Company Name: \_\_\_\_\_

Address: \_\_\_\_\_

\_\_\_\_\_ Country and Postal Code: \_\_\_\_\_

Telephone: \_\_\_\_\_ Fax: \_\_\_\_\_

E-mail: \_\_\_\_\_ Website: \_\_\_\_\_

Signature of Confirmation	Stand Number
Signed By (Full Name)	Date

If you are building your own stand or using a contractor for stand construction and/or interior decoration (including the Contractor), please fill in the following details:

Name of appointed Contractor  
 \_\_\_\_\_

Address of appointed Contractor  
 \_\_\_\_\_

E-mail: \_\_\_\_\_

Telephone: \_\_\_\_\_ Fax: \_\_\_\_\_

Contact Person: \_\_\_\_\_ Position: \_\_\_\_\_

Mobile Phone: \_\_\_\_\_

**FORM  
 11**

**DEADLINE  
 24 Sept'10**

**PLEASE  
 FAX BACK  
 or Email Back  
 THIS FORM TO**



**OFFICIAL CONTRACTOR**

PT. Sinar Suryagemilang Indah  
 Jl. P. Tubagus Angke  
 Blok. VV No. 21 C  
 Jakarta 11460  
 Telepon : +6221 5668511  
 Fax : +6221 5686187  
 info@ssi-group.biz  
 www.ssi-group.biz

**Attention  
 Ibu Sriyani**  
 kristamedia@ssi-group.biz

# FURNITURE RENTAL

Please Fill in their Form Neatly. Thank You. Mohon mengisi Formulir dengan rapih. Terima Kasih.

Company Name: \_\_\_\_\_  
 Address: \_\_\_\_\_  
 \_\_\_\_\_ Country and Postal Code: \_\_\_\_\_  
 Telephone: \_\_\_\_\_ Fax: \_\_\_\_\_  
 E-mail: \_\_\_\_\_ Website: \_\_\_\_\_

Signature of Confirmation	Stand Number
Signed By (Full Name)	Date

# FORM 12

## DEADLINE 24 Sept'10

**PLEASE  
FAX BACK  
or Email Back  
THIS FORM TO**



**OFFICIAL CONTRACTOR**

PT. Sinar Suryagemilang Indah  
 Jl. P. Tubagus Angke  
 Blok. VV No. 21 C  
 Jakarta 11460  
 Telepon : +6221 5668511  
 Fax : +6221 5686187  
 info@ssi-group.biz  
 www.ssi-group.biz

**Attention  
Ibu Sriyani**  
 kristamedia@ssi-group.biz

please tick your choice	CODE	ITEMS	PRICE/UNIT
<input type="checkbox"/>	F - 01	Reception desk (100 x 50 x 75cm)	USD 35
<input type="checkbox"/>	F - 02	Coffee round table (dia. 60cm,(H)75cm)	USD 42
<input type="checkbox"/>	F - 03	Glass round table (dia. 100cm,(H)75cm)	USD 42
<input type="checkbox"/>	F - 04	Easy chair	USD 18
<input type="checkbox"/>	F - 05	Upright chair	USD 15
<input type="checkbox"/>	F - 06	Lockable counter (90 x50 x75cm)	USD 35
<input type="checkbox"/>	F - 07	2 Tier counter display table (75, (H) 100cm,(W) 90cm)	USD 116
<input type="checkbox"/>	F - 08	3Tier counter display table (50, 75 100cm,(W) 90cm)	USD 162
<input type="checkbox"/>	F - 09	Display cube. 50x50x50cm (small)	USD 30
<input type="checkbox"/>	F - 10	Display cube. 50x50x75cm (medium)	USD 35
<input type="checkbox"/>	F - 11	Display cube. 50x50x100cm (Tall)	USD 70
<input type="checkbox"/>	F - 12	Fan, Industrial ((H)120cm)	USD 104
<input type="checkbox"/>	F - 13	Refrigerator	USD 116
<input type="checkbox"/>	F - 14	Shelving ( 100 x 30cm, 3 units/set)	USD 35
<input type="checkbox"/>	F - 15	Shelving 45° (100 x 30, 3 units/set)	USD 70
<input type="checkbox"/>	F - 16	Display panel board (1set=3unit, (W)100cm)	USD 53
<input type="checkbox"/>	F - 17	TV Plasma + DVD stand	USD 70
<input type="checkbox"/>	F - 18	DVD player only	USD 66
<input type="checkbox"/>	F - 19	TV plasma 42"	USD 500
<input type="checkbox"/>	F - 20	Showcase counter (50 x100 x100), no light	USD 93
<input type="checkbox"/>	F - 21	Showcase counter 2 Tier (50 x100 x100), no light	USD 139
<input type="checkbox"/>	F - 22	Square showcase (50 x 100 x 200), with light	USD 162
<input type="checkbox"/>	F - 23	High showcase (50 x 100 x 200), with light	USD 185
<input type="checkbox"/>	F - 24	Bar stool (100cm)	USD 23
<input type="checkbox"/>	F - 25	Sofa (for 1 person)	USD 70
<input type="checkbox"/>	F - 26	Flurescent lamp (40watt)	USD 45
<input type="checkbox"/>	F - 27	Spot light (100watt)	USD 45
<input type="checkbox"/>	F - 28	Halogen lamp (150watt)	USD 70
<input type="checkbox"/>	F - 29	Meta Hi-lite (150watt)	USD 70
<input type="checkbox"/>	F - 30	Brochure rack	USD 35
<input type="checkbox"/>	F - 31	Coat hanger	USD 81
<input type="checkbox"/>	F - 32	Plantation	USD 23
<input type="checkbox"/>	F - 33	Folding door (100 x 200cm)	USD 116
<input type="checkbox"/>	F - 34	Water dispenser (including 4 gallons of water + cups)	USD 81
<input type="checkbox"/>	F - 35	Alumunium frame 1m (to hang leather/cloth/S hangers)	USD 23

Total Amount

# ELECTRIC SUPPLIES RENTAL

Please Fill in their Form Neatly. Thank You. Mohon mengisi Formulir dengan rapih. Terima Kasih.

Company Name: \_\_\_\_\_

Address: \_\_\_\_\_

\_\_\_\_\_ Country and Postal Code: \_\_\_\_\_

Telephone: \_\_\_\_\_ Fax: \_\_\_\_\_

E-mail: \_\_\_\_\_ Website: \_\_\_\_\_

Signature of Confirmation	Stand Number
Signed By (Full Name)	Date

# FORM 13

**DEADLINE**  
**24 Sept'10**

**PLEASE  
FAX BACK  
or Email Back  
THIS FORM TO**



**OFFICIAL CONTRACTOR**

PT. Sinar Suryagemilang Indah  
 Jl. P. Tubagus Angke  
 Blok. VV No. 21 C  
 Jakarta 11460  
 Telepon : +6221 5668511  
 Fax : +6221 5686187  
 info@ssi-group.biz  
 www.ssi-group.biz

please tick your choice	CODE	ITEMS	PRICE/UNIT
<input type="checkbox"/>	E - 01	Spotlight 100W, 220V	USD 58
<input type="checkbox"/>	E - 02	Long Arm Spotlight @100W	USD 67
<input type="checkbox"/>	E - 03	Down Light @50W	USD 58
<input type="checkbox"/>	E - 04	Halogen @300W	USD 182
<input type="checkbox"/>	E - 05	Halogen @500W	USD 257
<input type="checkbox"/>	E - 06	Flourescent light 40W,220V	USD 58
<input type="checkbox"/>	E - 07	Socket / plug	USD 17
<input type="checkbox"/>	E - 08	2 Amp/1 phase,220V	USD 42
<input type="checkbox"/>	E - 09	4 Amp/1 phase,220V	USD 58
<input checked="" type="checkbox"/>	E - 10	6 Amp/1 phase,220V	USD 74
<input type="checkbox"/>	E - 11	10 Amp/1 phase,220V	USD 88
<input type="checkbox"/>	E - 12	13 Amp/1 phase,220V	USD 95
<input type="checkbox"/>	E - 13	15 Amp/1 phase,220V	USD 114
<input type="checkbox"/>	E - 14	16 Amp/1 phase,220V	USD 128
<input type="checkbox"/>	E - 15	16 Amp/3 phase,380V	USD 257
<input type="checkbox"/>	E - 16	20 Amp/ 1 phase, 220V	USD 151
<input type="checkbox"/>	E - 17	20 Amp/ 3 phase, 380V	USD 378
<input type="checkbox"/>	E - 18	25 Amp/ 1 phase, 220V	USD 174
<input type="checkbox"/>	E - 19	25 Amp/ 3 phase, 380V	USD 500
<input type="checkbox"/>	E - 20	32 Amp/1 phase,220V	USD 197
<input type="checkbox"/>	E - 21	32 Amp/3 phase,380V	USD 578
<input type="checkbox"/>	E - 22	60 Amp/3 phase,380V	USD 779
<input type="checkbox"/>	E - 23	100 Amp/3 phase,380V	USD1,241
<input type="checkbox"/>	E - 24	Connection of exhibits	USD 74

PLEASE TICK ( ) YOUR CHOICE

Total Amount

These charges include provision of power points and electricity consumed, but they do not include direct connection to machinery etc... Which will be charge at USD 70 per connection if required.

Note:

- 1.The shell scheme includes two (2) fluourescent tubes. Order only your additional requirement.
- 2.Prices include consumption (show hour only).
- 3.Onsite orders are liable to 50% surcharge, supply will be given the night before opening the exhibition and must be paid in advance.

Orders are valid only when accompanied by full remittance.

Payment should be made payable to PT. SINAR SURYAGEMILANG INDAH

Attention  
**Ibu Sriyani**  
 kristamedia@ssi-group.biz

# AUDIO VISUAL RENTAL

Please Fill in their Form Neatly. Thank You. Mohon mengisi Formulir dengan rapih. Terima Kasih.

Company Name: \_\_\_\_\_  
 Address: \_\_\_\_\_  
 \_\_\_\_\_ Country and Postal Code: \_\_\_\_\_  
 Telephone: \_\_\_\_\_ Fax: \_\_\_\_\_  
 E-mail: \_\_\_\_\_ Website: \_\_\_\_\_

Signature of Confirmation	Stand Number
Signed By (Full Name)	Date

# FORM 14

**DEADLINE**  
**24 Sept'10**

**PLEASE  
FAX BACK  
or Email Back  
THIS FORM TO**



**OFFICIAL CONTRACTOR**

PT. Sinar Suryagemilang Indah  
 Jl. P. Tubagus Angke  
 Blok. VV No. 21 C  
 Jakarta 11460  
 Telepon : +6221 5668511  
 Fax : +6221 5686187  
 info@ssi-group.biz  
 www.ssi-group.biz

**Attention**  
**Ibu Sriyani**  
 kristamedia@ssi-group.biz

	CODE	ITEMS	Price/unit/4days
<input type="checkbox"/>	A - 20	TV 21" and VHS/VCD player (min.4days)	USD. 325
<input type="checkbox"/>	A - 22	TV 29" and VHS/VCD player (min.4days)	USD. 370
<input type="checkbox"/>	A - 23	VHS Player (min.4days)	USD. 210
<input type="checkbox"/>	A - 24	VCD Player (min.4days)	USD. 210
<input type="checkbox"/>	A - 25	DVD Player (min.4days)	USD. 66
<input type="checkbox"/>	A - 26	LCD Projector (min.4days)	USD. 630
<input type="checkbox"/>	A - 27	Sound System 1000 watt (min.4days)	USD. 557
<input type="checkbox"/>	A - 28	Screen 2 x 3 (min.4days)	USD. 630
<input type="checkbox"/>	A - 29	Screen 3 x 4 (min.4days)	USD. 787
<input type="checkbox"/>	A - 30	TV Plasma 42" (min.4days)	USD. 500

YOUR CHOICE



PLEASE TICK (

Total Amount

Note: Onsite order are liable to 25% surcharge, and must be paid in advance.

Orders are valid only when accompanied by full remittance.  
 Payment should be made payable to PT. SINAR SURYAGEMILANG INDAH

# TELEPHONE & FACSIMILE RENTAL

*Please Fill in their Form Neatly. Thank You. Mohon mengisi Formulir dengan rapih. Terima Kasih.*

Company Name: \_\_\_\_\_

Address: \_\_\_\_\_

\_\_\_\_\_ Country and Postal Code: \_\_\_\_\_

Telephone: \_\_\_\_\_ Fax: \_\_\_\_\_

E-mail: \_\_\_\_\_ Website: \_\_\_\_\_

Signature of Confirmation	Stand Number
Signed By (Full Name)	Date

**FORM  
15**

**DEADLINE  
24 Sept'10**

**PLEASE  
FAX BACK  
or Email Back  
THIS FORM TO**



**KRISTA  
EXHIBITIONS**

KRISTA EXHIBITIONS  
 PT. Kristamedia Pramata  
 Jl. Blandongan No.28 d/g  
 Jakarta 11220

Telephone  
 +62 21 6345861, 6345862  
 6334581, 6345002

Facsimile  
 + 62 21 6340140, 6342113  
 63869154

E-mail : [info@kristamedia.com](mailto:info@kristamedia.com)  
 Website : [www.kristamedia.com](http://www.kristamedia.com)

**Attention  
Pudji Rahayu**  
[pudji@kristamedia.com](mailto:pudji@kristamedia.com)

**Valans Indradjaja**  
[valans@kristamedia.com](mailto:valans@kristamedia.com)

PLEASE TICK (  ) YOUR CHOICE

Yes, we wish to order the following telephones / fax:

- (  ) Local city calls only  
 USD 110 + calls extra
- (  ) Long Distance direct dialing Indonesian calls only  
 USD 207 + calls extra plus USD 440 Deposit
- (  ) International Direct Dial (IDD) line  
 USD 344 + calls extra plus USD 660S Deposit

Note: Onsite order are liable to 50% surcharge, supply will be given the night before the opening of the exhibition and must be paid in advance.

Orders are valid only when accompanied by full remittance.  
 Payment should be made payable to PT. KRISTAMEDIA PRATAMA

# COMPRESSED AIR SUPPLY RENTAL

*Please Fill in their Form Neatly. Thank You. Mohon mengisi Formulir dengan rapih. Terima Kasih.*

Company Name: \_\_\_\_\_

Address: \_\_\_\_\_

\_\_\_\_\_ Country and Postal Code: \_\_\_\_\_

Telephone: \_\_\_\_\_ Fax: \_\_\_\_\_

E-mail: \_\_\_\_\_ Website: \_\_\_\_\_

Signature of Confirmation	Stand Number
Signed By (Full Name)	Date

- Compressed air supply, USD.450 per point.
1. Air Consumption \_\_\_\_\_ 1/min/CFM
  2. Working pressure \_\_\_\_\_ bar/PSI
  3. Size of fitting \_\_\_\_\_

- PLEASE INDICATE LOCATIONS OF THE AIR OUTLETS
1. Price quoted are meant for one (1) direct connection per machine only .
  2. Normal operation pressure is 6-7 bar.
  3. The standard air supplied is 3 degree pdp.
  4. All connections to be h a quick release coupling.
  5. Any requirement other than the standard order , to be quoted separately.

- IMPORTANT NOTES:
1. Compressed air will be delivered from air compressors located outside the hall , with the dryer unit , and delivered to your stand by an under floor delivery system . Supply is no totally "clean" . Exhibitors must provide their own filters if 100% clean , dry air is needed. For your information , the percentage of humidity and oil content is approximately 10% and 40ppm respectively. It is the responsibility of the Exhibitor to drain off the water residue regularly .
  2. The Organizers reserve the right to supply any requirements in certain parts of the Hall by electricity driven individual compressors located at the stand due to the existing Hall limitations. However, this air supply may not have a dryer incorporated in the system .
  3. Exhibitors who wish to bring their own electrically-driven and silent type compressors ( up to 1HP) are requested to first write to the Organizers . However , for safety reasons , any requirement needing larger compressors must be provided by the Official Contractor .
  4. All connections to machines , if requested through the Official Contractor , must be carried out under the supervision of the Exhibitor's staff .
  5. Exhibitors are not permitted to cut or damage any equipment or fitting supplied by the Official Contractor , otherwise the Exhibitor must bear the cost of such damage .
  6. If the standard supply shown in the Order form is not suitable for your purpose , please provide the Organizers directly with detailed specifications for s quotation.
  7. All connections will be terminated in a quick-release coupling , type SH22/PH22 for 6mm to 12mm internal hose or SH24/Ph24 for 15mm to 20mm internal diameter hose. Exhibitors requiring other type of connection must provide their own fittings (both male & female) for attachment to the coupling or valve provided by the Official Contractor.

Note: Onsite order are liable to 50% surcharge, supply will be given the night before the opening of the exhibition and must be paid in advance.

Orders are valid only when accompanied by full remittance.  
 Payment should be made payable to PT. SINAR SURYAGEMILANG INDAH

# FORM 16

**DEADLINE**  
**24 Sept'10**

**PLEASE  
FAX BACK  
or Email Back  
THIS FORM TO**



**OFFICIAL CONTRACTOR**

PT. Sinar Suryagemilang Indah  
 Jl. P. Tubagus Angke  
 Blok. VV No. 21 C  
 Jakarta 11460  
 Telepon : +6221 5668511  
 Fax : +6221 5686187  
 info@ssi-group.biz  
 www.ssi-group.biz

**Attention**  
**Ibu Sriyani**  
 kristamedia@ssi-group.biz

# WATER CONNECTION

Please Fill in their Form Neatly. Thank You. Mohon mengisi Formulir dengan rapih. Terima Kasih.

Company Name: \_\_\_\_\_

Address: \_\_\_\_\_

\_\_\_\_\_ Country and Postal Code: \_\_\_\_\_

Telephone: \_\_\_\_\_ Fax: \_\_\_\_\_

E-mail: \_\_\_\_\_ Website: \_\_\_\_\_

Signature of Confirmation	Stand Number
Signed By (Full Name)	Date

PLEASE TICK (  ) YOUR CHOICE

ITEM AVAILABLE	UNIT COST	INLET	OUTLET	QTY	AMOUNT
Water inlet/outlet Inclusive of up to 20m length of piping	USD.462	12mm	35mm		
Water inlet/outlet With supply of sink	USD.627	12mm	35mm		
Every Additional Meter run of pipe	USD. 26				
					Total cost

Please mark position of water/waste point.  
 POSITION OF WATER / WASTE POINT  
 BACK WALL


AISLE (Please state dimension of booth)

The water supply provided come at ambient temperature and normal household pressures and flow rate, which may vary at different locations within the Hall. The drainage is by gravity Flow. Exhibitors who have special plumbing requirements should state details below so that a separate individual quotation can be provided:

-----

-----

-----

-----

Note: Onsite order are liable to 50% surcharge, supply will be given the night before the opening of the exhibition and must be paid in advance.

Orders are valid only when accompanied by full remittance.  
 Payment should be made payable to PT. SINAR SURYAGEMILANG INDAH

# FORM 17

## DEADLINE 24 Sept'10

**PLEASE  
FAX BACK  
or Email Back  
THIS FORM TO**



**OFFICIAL CONTRACTOR**

PT. Sinar Suryagemilang Indah  
 Jl. P. Tubagus Angke  
 Blok. VV No. 21 C  
 Jakarta 11460  
 Telepon : +6221 5668511  
 Fax : +6221 5686187  
 info@ssi-group.biz  
 www.ssi-group.biz

**Attention  
Ibu Sriyani**  
 kristamedia@ssi-group.biz

# HOTEL RESERVATION

Please Fill in their Form Neatly. Thank You. Mohon mengisi Formulir dengan rapih. Terima Kasih.

Company Name: \_\_\_\_\_

Address: \_\_\_\_\_

\_\_\_\_\_ Country and Postal Code: \_\_\_\_\_

Telephone: \_\_\_\_\_ Fax: \_\_\_\_\_

E-mail: \_\_\_\_\_ Website: \_\_\_\_\_

Signature of Confirmation	Stand Number
Signed By (Full Name)	Date

\* We regard confirmation booking for Hotel reservation upon receiving form 18 from you.  
 \* Please inform us of cancellation minimal 7 days before date of check in. Failure of which, one room night Hotel cost / per booking will be charged to your credit card. Thank you for your cooperation.

OFFICIAL HOTELS - All Reservations and payments is to be made to the hotels

ALILA HOTEL  
 USD 96.8 nett/room/night (single/double)\*\*\*\*  
 Inclusive breakfast for 2 persons  
 Free shuttle bus service to & from exhibition  
 Free internet access in the room  
 Airport pick up (USD 35nett/car/way)

SHERATON MEDIA HOTEL  
 USD 96.8 nett/room/night (single/double)\*\*\*\*  
 Inclusive breakfast for 2 persons  
 Free shuttle bus service to & from exhibition  
 Internet access (USD 17/day)  
 Airport pick up (USD 19nett/car/way)

MERCURE JAKARTA KOTA HOTEL  
 USD 77 nett/room/night (single/double)\*\*\*\*  
 Inclusive breakfast for 2 persons  
 Free shuttle bus service to & from exhibition  
 Free internet access in the room  
 Airport pick up (USD 35nett/car/way)

NOVOTEL MANGGA DUA HOTEL  
 USD 90,75 nett/room/night (single/double)\*\*\*\*  
 Inclusive breakfast for 2 persons  
 Free shuttle bus service to & from exhibition  
 Free internet access in the room  
 Airport pick up (USD 19nett/car/way)

SWISS-BELHOTEL MANGGA BESAR  
 USD 90,75 nett/room/night (single/double)\*\*\*\*  
 Inclusive breakfast for 2 persons  
 Free shuttle bus service to & from exhibition  
 Free internet access in the room  
 Airport pick up (USD 20nett/car/way)

LE-GRANDEUR MANGGA DUA  
 USD 94 nett/room/night (single/double)\*\*\*\*  
 Inclusive breakfast for 2 persons  
 Free shuttle bus service to & from exhibition  
 Internet access (USD 13/day)  
 Airport pick up (USD 25nett/car/way)

Please pick me up from airport.  
 (For airport pickup, please inform minimal 48hours before arrival time)

Date	Flight Number	Arrival Time

The above price does not include charges for Telephone or other expenses made during the stay in the respective hotels. Telephone and other bills are to be paid to the respective hotels.

No	Name of Occupant	Check In Date	Check Out Date	Total Room	Total Night	Cost

# FORM 18

## DEADLINE

**PLEASE  
FAX BACK  
or Email Back  
THIS FORM TO**



**KRISTA  
EXHIBITIONS**

KRISTA EXHIBITIONS  
 PT. Kristamedia Pramata  
 Jl. Blandongan No.28 d/g  
 Jakarta 11220

Telephone  
 +62 21 6345861, 6345862  
 6334581, 6345002

Facsimile  
 + 62 21 6340140, 6342113  
 63869154

E-mail : info@kristamedia.com  
 Website : www.kristamedia.com

**Attention**

**LIVIA**

livia@kristamedia.com

## DISPLAY COUNTERS



Easy Chair  
72 cm (H)



Upright Chair  
75 cm (H)



Coffee Table  
φ 60 cm, 75 cm (H)



Round Table  
φ 100 cm, 75 cm (H)



Reception Desk



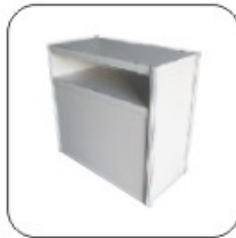
Locable Counter  
90 x 50 x 75 cm



2 Tier Counter Disp. Table  
75, 100 cm (H): 90 cm (W)



3 Tier Counter Disp. Table  
50, 75, 100 cm (H): 90 cm (W)



TV + Player Standing  
100 x 50 x 100 cm



Display Cube  
50x50x50cm - 50x50x75cm - 50x50x100cm



Fan



Refrigerator



Shelving  
100 x 30 cm



Display Panel Board  
100 x 20 cm



TV Plasma Stand  
90 x 200 cm (W x H)

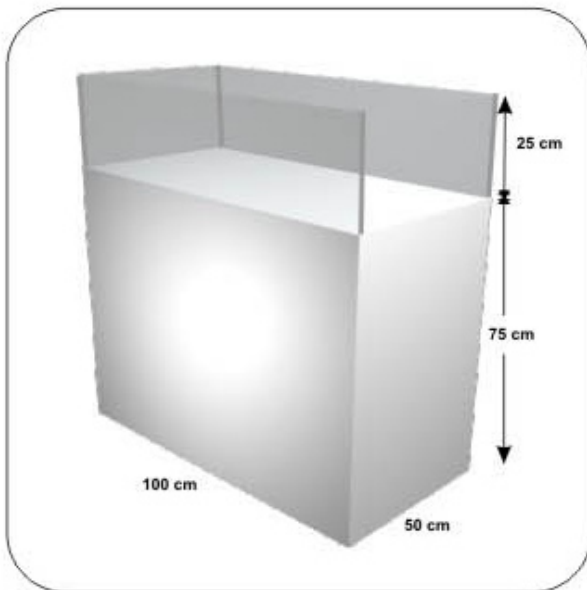


VCD / DVD

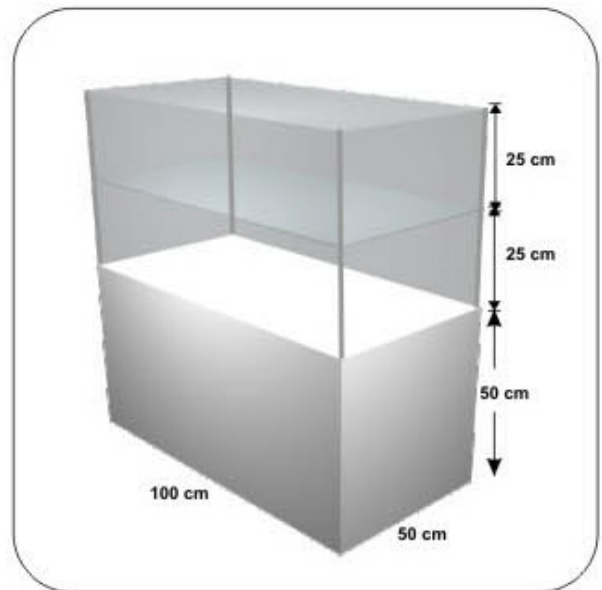


Plasma TV 42"

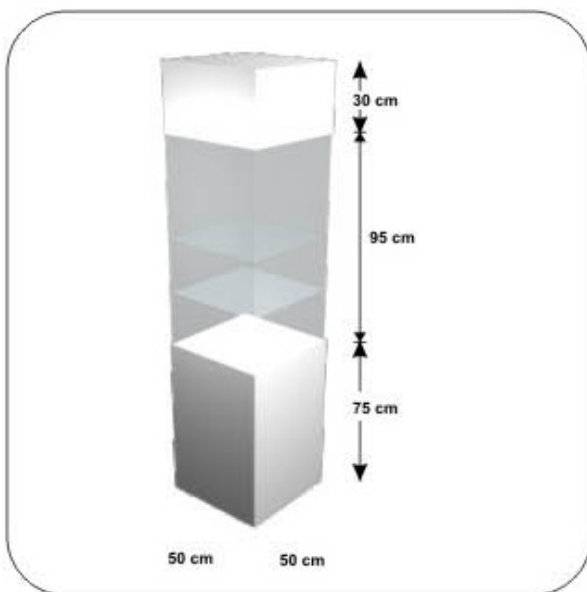
# SHOWCASE



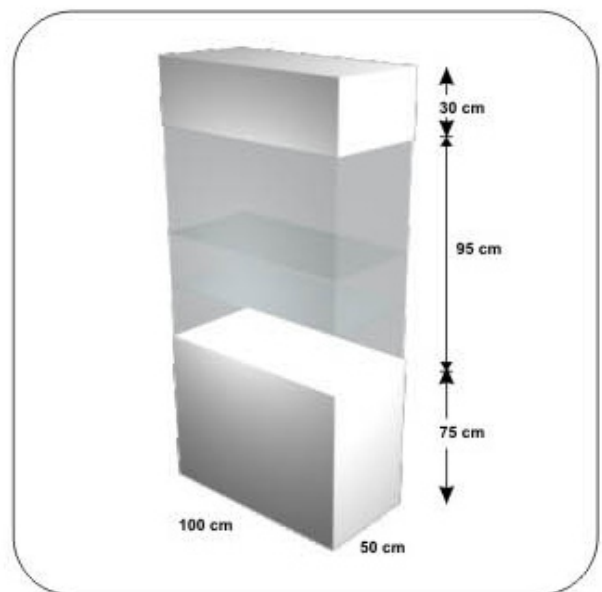
**1 SHOWCASE COUNTER**  
 Dimensi : 100 cm (L) x 50 cm (W) x 100 cm (H)



**2 2-TIER SHOWCASE COUNTER**  
 Dimensi : 100 cm (L) x 50 cm (W) x 100 cm (H)



**3 SQUARE SHOWCASE**  
 Dimensi : 50 cm (L) x 50 cm (W) x 200 cm (H)



**4 HIGH SHOWCASE**  
 Dimensi : 100 cm (L) x 50 cm (W) x 200 cm (H)